

60  
YEARS  
*Of Excellence*



ELEVATORS  
BIRLA GROUP COMPANY



***APTO***

*We Keep You Moving... Always*

***Truly Indian***



[www.eceelevators.com](http://www.eceelevators.com)



If you have travelled in India, chances are you have travelled with us inside many prestigious buildings of this great nation. For over six decades now, ECE has been making state of the art elevators.

***We are ECE...***

***"We keep you moving... Always!"***

- Established in 1945, ECE is the only public listed company (National Stock Exchange - NSE) in the elevator industry.
- One of the leading domestic brand names in electrical equipment and elevators with 60 years of enriched experience.
- The first domestic player to engage in elevators manufacturing in India with long term successful technology collaboration with worldwide industry leaders of Europe and Japan.
- The one and only fully integrated manufacturing facility spread over 250,000 square feet in the National Capital Region at Ghaziabad, Uttar Pradesh.
- More than 400 trained employees and growing with a product range positioned to address the entire spectrum of Indian market.
- A dedicated in house research and design team and amongst the very few of the elevator plants in India with capability to manufacture all lift components.
- Pan India field operations spread across 20 cities with thousands of elevators in service portfolio.
- ECE Elevator is made in India, is cost competitive and we strive to be India's most trustworthy elevator brand.
- We bring to the industry speed, agility, reliability and the human touch. We understand India better than most.
- Our team is committed to its customers, the users and the environment.

*Truly Indian*

*Versatile*

*Reliable*

*Value For Money*



ELEVATORS

# APTO

## MADE FOR VERSATILITY

Versatile APTO with its new and improved features is a step ahead. Its unique design combines style with comfort and performance with efficiency, making it a technology that surpasses all expectations. The versatile APTO is made in India exclusively for your stylish buildings and is the best value for money.

### Key Events

#### 1945

Incorporation and commencement of operations for repairs and manufacture of electrical equipment's

#### 1971

Set-up manufacturing facility for manufacturing elevators at Ghaziabad, Uttar Pradesh

#### 2002

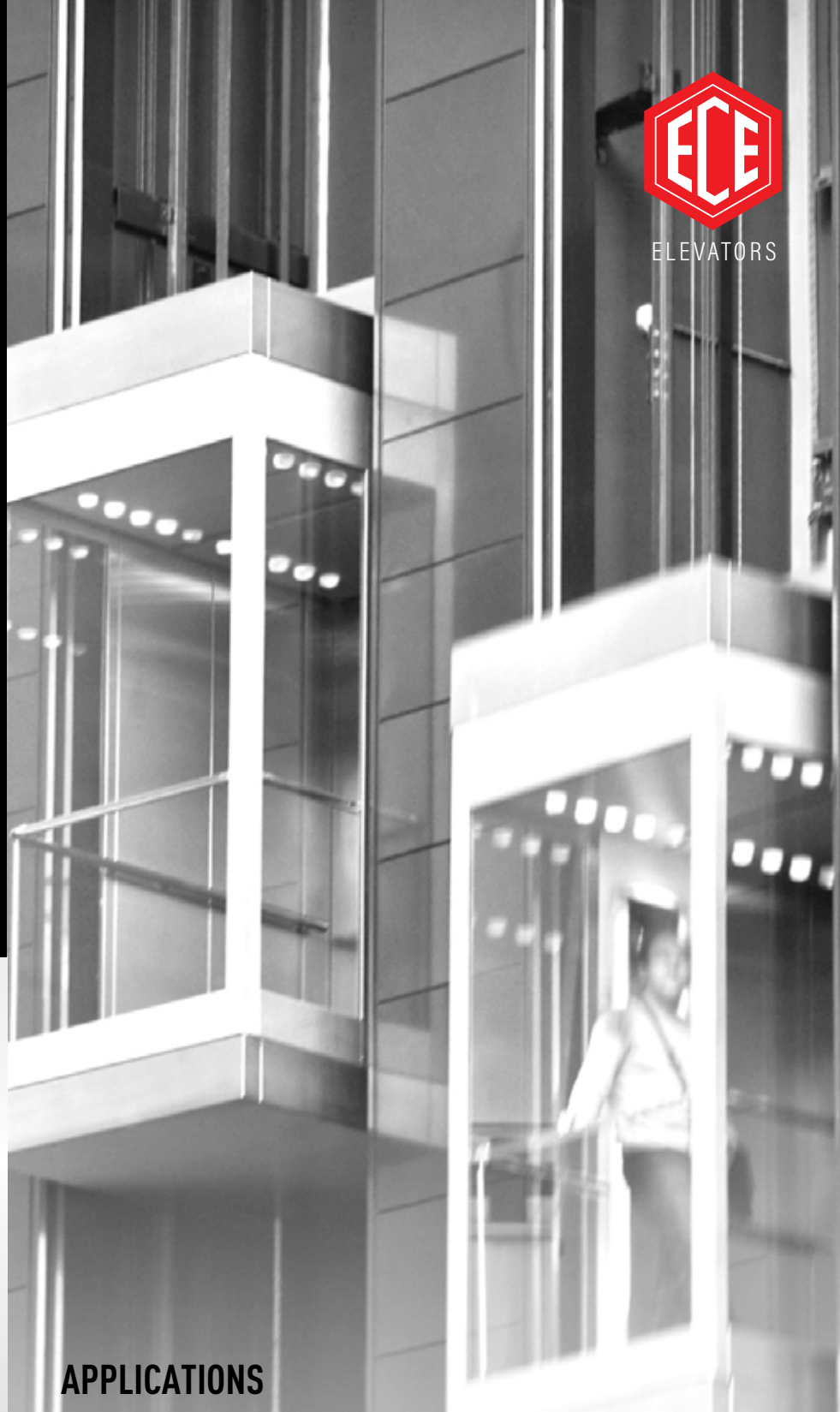
Transferred field operations of elevators division to ThyssenKrupp and entered into exclusive supply agreement with them (for 3 years) with non-compete for 5 years

#### 2015

Expansion and modernization plans initiated in Elevator division with next generation in house products, best in class people and service systems

#### 2017

Launch of 24X7 ECE call centre



### APPLICATIONS

Passenger		4	5	6	8	10	13	15	16	20	26
Load (Kgs)		272	340	408	544	680	884	1020	1088	1360	1768
Speed (MPS)	0.5										
	0.7										
	1										
Entrance	Automatic : Centre Opening (ACO) & Telescopic Opening (ATO)										
Travel Height	Max 40 Meters										
Stops	Max 12										
Group Size	Simplex Collective Selective										
	Duplex Collective Selective										
Drive	Variable Voltage Variable Frequency										

Truly Indian

Versatile

Reliable

Value For Money

Geared Automatic Door with machine room

# WHY? **APTO**



## VERSATILE DESIGN

Essential equipment requires industrial strength, local operational agility and experience. Being locally produced in India, APTO is precise to meet the challenging demands of your building. Its design allows positive integration with your building aesthetics.

APTO's versatility is exhibited by:

- Wide range of designs
- Optimized and most efficient shaft dimensions
- Customization available to produce "To Suit" cars
- Delivery lead time to meet your requirements

APTO ensures distinctive solution by offering new designs continuously.



## RELIABILITY

Because your buildings deserve reliable systems, APTO is equipped with latest technology which helps provide reliable and easy to maintain solutions to your building user.

An experienced, professional and trained team behind APTO ensures:

- Best use of latest technologies
- Adherences to the latest provisions of Indian Standards
- Process oriented maintenance systems

APTO enables a truly made in India product which is agile to the Indian environment and its reliability reemphasizes our commitment:

**We keep you moving ....always.**



## VALUE FOR MONEY

APTO is a synonym for "value for money". This made in India equipment provides added comfort and enhances the style content of your building with following enhanced features:

- Low Cost Of Ownership
- Refreshing Cab Finishes
- Reduced Noise level
- Reduced Vibration levels



## SAFETY

Basic mission behind the designing of APTO was to provide adequate safety to passengers. APTO is loaded with many safety features which ensures passenger safety including:

- Infrared Door Detection Device
- Floor Detection System
- Automatic Rescue Device

A Six decade long safe work culture of ECE combined with domain expertise ensures.

**safely**

**We keep you moving.. ^ ..always.**



ELEVATORS



## STANDARD CAR

### ASC-001

Finish	Panels	Mild Steel Powder Coated - Ivory
	Corner Panel	Mild Steel Powder Coated - Orange
False Ceiling	Type	Mild Steel Powder Coated - AFC-103
	Color	Ivory
Flooring	Type	Vinyl Tiles
	Color	Super Cream
Car Height	Below false ceiling	2100 mm

## LANDING OPERATING PANEL

### ALOP-7-0

Position	On each landing
Face Plate	
Type	Wall Mounted
Finish	Stainless Steel Hairline
Indicator	7 Segment
Button	
Type	Illuminated micro push button
Button Head	Stainless Steel Hair line with Braille
Illumination	
Type	LED
Color	Orange



## CAR OPERATING PANEL

### ACOP-7-0

Position	Inside car on side panel
Face Plate	
Type	Flat
Finish	Stainless Steel
Indicator	7 Segment
Button	
Type	Illuminated micro push button
Button Head	Stainless Steel Hair line with Braille
Illumination	
Type	LED
Color	Orange



## FALSE CEILING : AFC-103 / AFC-103SS

Finish	Mild Steel Powder Coated - Ivory / SSSL*
Illumination	LED Tube Light
Fan	Pressure Fan with Grill

\* Standard Option - Stainless Steel Hairline Finish



## FLOORING

Material	Vinyl - Anti skid
Color	Super Cream

Truly Indian

Versatile

Reliable

Value For Money

# DESIGNER CABINS

ADC-001



Description	Material
Car Door Panels, Side Panel Accent	MSPC-White
Front Return Panel, Side Panels, Rear Panels, Entrance Top Panel	MSPC-RAL 1014
Rear Panel Accent	Mirror
False Ceiling	MSPC-RAL 1014
Flooring	Vinyl : Super Cream /Marble*

ADC-002



Description	Material
Car Door Panel/Front Return Panel / Side Panel Accent / Entrance Top Panel	MSPC-White
Side Panels /Rear Panels	Coated Sheet : PPS14
Rear Panel Accent	Stickered glass over MS
False Ceiling	MSPC-White
Flooring	Vinyl : Lily White / Marble*

MSPC - Mild Steel Powder Coated

\* Marble by customer 20 mm recess shall be provided in car by us

Actual size of the panel may vary according to size of the car

## FINISHES

### POWDER COATING COMBINATIONS



Nickel Grey / Purple



Ivory / Orange



RAL1014 / Golden



Sand Beige / Purple



Ivory / Blue



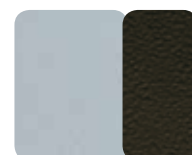
Dark Grey / Pista Green



Sand Beige / Orange



Pista Green / Golden



Sand Beige / Brown Leatherite



RAL1014 / Signal Red

Truly Indian

Versatile

Reliable

Value For Money



ELEVATORS

**ADC-003**



**ADC-004**



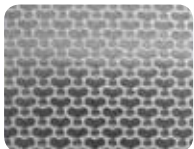
Description	Finish
Front Return Panel, Side Panels, Entrance Top Panel, Rear Panels	Coated Sheet : 1019
Side and rear accent panel, Car door panel	Coated Sheet : 277
False Ceiling	MSPC-White
Flooring	Vinyl : Lily White / Marble*

Description	Finish
Front Return Panel, Side Panels, Entrance Top Panel, Rear Panels	Coated Sheet : DL5
Side and rear accent panel, Car door panel	Coated Sheet : DL68
False Ceiling	MSPC-RAL 1014
Flooring	Vinyl : Super Cream / Marble*

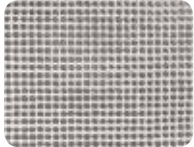
**METAL EFFECTS**



Stainless steel hairline



Stainless steel honey comb



Linen stainless steel

**COATED SHEET**



PPS14



1019



277



DL5



DL68

**MARBLE**



Marble design  
(Marble / Granite by customer, 20mm recess provided in flooring as an option)

**PVC FLOORING**



Ocean Blue



Lily White



Light Grey



Super Cream

Truly Indian

Versatile

Reliable

Value For Money

# FEATURES

## FRAMED GLASS DOOR

Features / Safety	Standard	Optional
Collective Selective Operation	✓	-
Simplex Control	✓	-
Duplex Control	-	✓
Independent Service	-	✓
Attendant Service	✓	-
Reverse Opening	-	✓
Double Car Operating Panel	-	✓
Door Open Button	✓	-
Door Close Button	✓	-
Fan on/off button	✓	-
Intercom	✓	-
Emergency Alarm	✓	-
Infrared Door Detection	✓	-
Emergency Light	✓	-
Auto Light and Fan On /Off	✓	-
Floor Announcement	-	✓
VWF Control	✓	-
Overload Function	✓	-
Over speed Governor Switch	-	✓
Automatic Rescue Device	-	✓
Fireman Operation	-	✓
Access Control Provision	-	✓
CCTV Camera Provision	-	✓

Above 5 stops / 15 meter building height glass doors - Fire Rated Glass Doors Required

Truly Indian

Versatile

Reliable

Value For Money





ELEVATORS

OPTIONS



**ALOP-S-0**

Position	On each landing
Face Plate	
Type	Wall mounted
Finish	Stainless steel hairline
Indicator	Scrolling
Button	
Type	Illuminated micro push button
Button Head	Stainless Steel Hair line with Braille
Illumination	
Type	LED
Color	Orange



**ACOP-S-G-C / ACOP-S-O-C /  
ACOP-S-G / ACOP-S-O**

Position	Inside car on side panel
Face Plate	
Type	Flat
Finish	Grey Coated Sheet / Stainless Steel
Indicator	Scrolling
Button	
Type	Illuminated micro push button
Button Head	Stainless Steel Hair line with Braille
Illumination	
Type	LED
Color	Green / Orange



**FALSE CEILING : AFC-101 / AFC-101PC**

Finish	Stainless Steel Hair Line Finish (SSHL) / Mild Steel Powder Coated (MSPC)
Illumination	LED Spot light
Fan	Pressure fan with grill



**HANDRAIL : AHR-001**

Material	Mild Steel Powder Coated /Stainless steel hairline finish
Shape	Round

Truly Indian

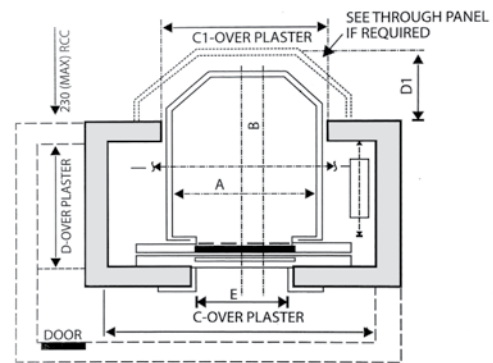
Versatile

Reliable

Value For Money

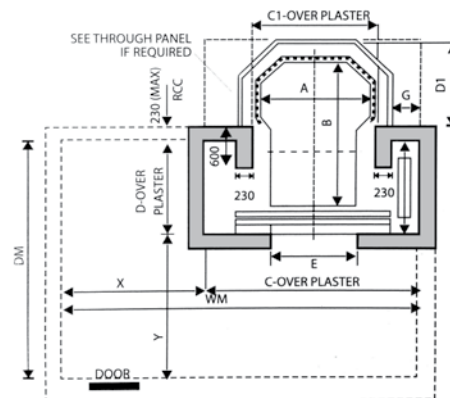


## PANORAMIC ELEVATORS



Passengers	8	10	13		
Rated Load	544 Kg.	680 Kg.	884 Kg.		
A	1100	1300	1100	1400	1300
B	1400	1450	1700	1700	1830
C	2300	2500	2300	2500	2500
C1	1250	1450	1300	1550	1450
D	1200	1200	1300	1300	1300
D1	650	650	850	740	970
Area	1.47 m <sup>2</sup>	1.79m <sup>2</sup>	1.79m <sup>2</sup>	2.25m <sup>2</sup>	2.25m <sup>2</sup>
E	800	800	800	900	900

Cabin Inside Height : 2200 mm to false ceiling  
Pit Depth (Min.) : 2000 mm, 1800 mm, 1600 mm  
(According to bottom dome)  
Headroom : 5000 mm  
Machine Room Reqd.  
Width (Min.) : C+1500  
Depth (Min.) : D+2000  
Height : 2500

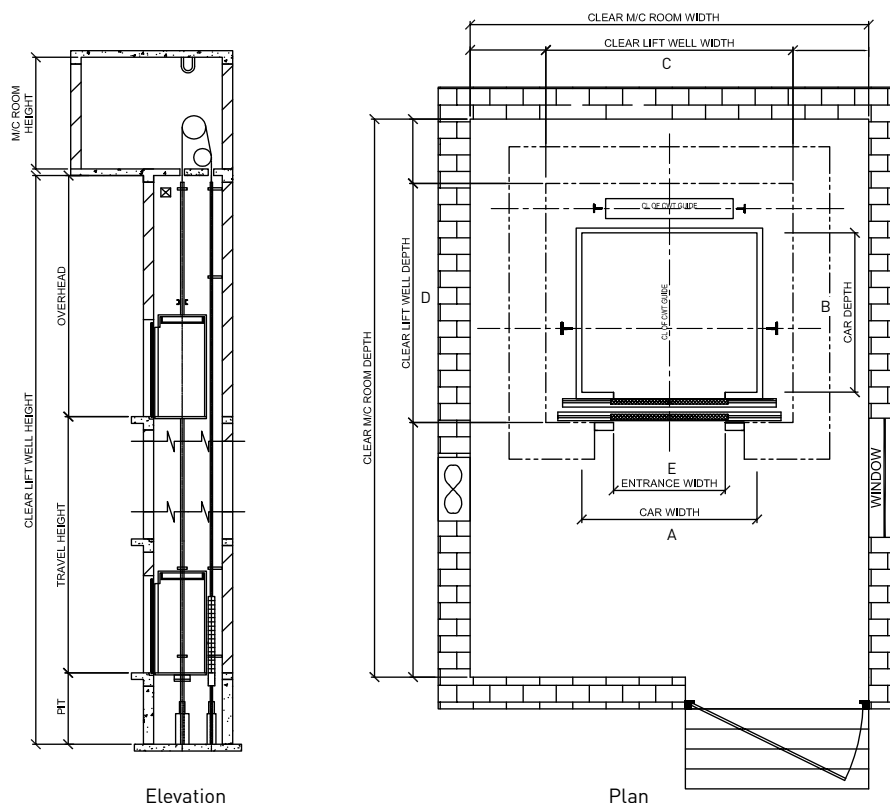


Passengers	10	13	16	20
Rated Load	680 Kg.	884 Kg.	1088 Kg.	1360 Kg.
A	1200	1300	1600	1800
B	1900	2400	2150	2300
C	2200	2600	3000	3000
C1	1150	1250	1300	1750
D	850	1050	1250	1300
D1	1300	1350	1400	1550
E	800	900	1000	1000
X	1500	2000	1500	1500
Y	2000	2500	2000	2000
WM	3700	4200	4650	4650
DM	2850	3550	3400	3400
G	330	480	480	480



ELEVATORS

# LAYOUT & DIMENSIONS



Elevation

Plan

Rated Load (Kgs)	Nominal Speed (mps)	Car Size (A x B), mm	Standard Hoistway Size (C x D), mm	Door Size (C x Height), mm	Door Opening Type (Centre / Telescopic)	Pit Depth	Overhead
272 (4p)	0.7	1100 x 700	1500 x 1200	700 x 2000	ACO	1350	4300
	1	900 x 850	1300 x 1450	700 x 2000	ATO		
340 (5p)	0.7	1100 x 850	1500 x 1350	700 x 2000	ACO		
	1	1000 x 850	1400 x 1500	700 x 2000	ATO		
408 (6p)	0.7	1100 x 1000	1500 x 1500	700 x 2000	ACO		
		1200 x 900	1600 x 1400	700 x 2000	ACO		
	1	1100 x 1000	1700 x 1500	800 x 2000	ACO		
		1000 x 1000	1400 x 1600	700 x 2000	ATO		
544 (8p)	0.7	1300 x 1100	1750 x 1650	800 x 2000	ACO		
	1	1200 x 1200	1600 x 1800	800 x 2000	ATO		
680 (10p)	0.7	1350 x 1300	1800 x 1800	800 x 2000	ACO		
	1	1300 x 1350	1700 x 1950	800 x 2000	ATO		
884 (13p)	0.7	2000 x 1100	2400 x 1750	900 x 2000	ACO		
		1100 x 2000	1750 x 2400	900 x 2000	ATO		
		1700 x 1250	2100 x 1800	900 x 2000	ACO		
		1250 x 1700	1650 x 2300	900 x 2000	ATO		
		1100 x 2000	1950 x 2400	900 x 2000	ACO		
		2000 x 1200	2400 x 1800	1000 x 2000	ACO		
1020 (15p)	0.7	1200 x 2000	1800 x 2400	1000 x 2000	ATO		
		1000 x 2400	1700 x 2800	900 x 2000	ATO		
		1600 x 1500	2100 x 2000	1000 x 2000	ACO		
		1088 (16p)	0.7	1600 x 1600	2300 x 1950	1000 x 2000	ACO
1	2000 x 1300	2500 x 1800	1000 x 2000	ACO			
1360 (20p)	0.7	2000 x 1500	2500 x 2100	1000 x 2000	ACO		
	1						

Dimensions are in 'mm'

## General Note

- All dimensions are in millimeters. All dimensions are clear finished lift wells after plastering. Plumbness of the shaft must be upto maximum +50mm. Dimensions are suitable for lifts speed upto 1 m/s.
- Dimensions in the machine room depend on number and orientation of lift shafts. Lifting hook is required in machine room slab . All walls minimum 150 (RCC) or 230mm ( brick).
- Hoistway front wall 230mm brick preferred. Door below lintel height to be minimum = Entrance height + 250mm.
- RCC machine room structural slab minimum 150mm thick, designed to sustain minimum 1000 kg/m<sup>2</sup> UDL. For specific requirements our local representative will be happy to work with you in preparation of the drawings.
- 2400mm minimum opening height required at lowest and ground floor levels for entry of assembled equipment in shaft.
- Any dimension beyond above please contact our sales representative / [sales@ecelelevators.com](mailto:sales@ecelelevators.com)

Abbreviation : ACO - Automatic Centre Opening, ATO - Automatic Telescopic Opening

Truly Indian

Versatile

Reliable

Value For Money



**ELEVATORS**  
AN ISO 9001:2008  
CERTIFIED COMPANY

## NETWORK

- REGISTERED OFFICE
- PLANT
- BRANCH OFFICE
- RESIDENT ENGINEERS



### NORTH

**DELHI**  
**NEW DELHI**  
ECE House Annexe,  
28A, K.G. Marg, New Delhi - 110 001  
Tel : 011-23314237 / 38 / 39

**UTTAR PRADESH**  
**NOIDA**  
G - 39, Sector - 63, Noida  
Dist . Gautam Budh Nagar - 201 301  
Tel : 0120 - 4545200

**LUCKNOW**  
B-103, Sector-C, Mahanagar,  
Dist . Lucknow - 226 006  
Tel : +91 - 770 408 0111

**PUNJAB**  
**MOHALI**  
SCO No. - 12-13, 2nd Floor, Sector - 65 A,  
Phase-XI, Mohali - 160 055  
Tel : +91 - 814 616 8095

**RAJASTHAN**  
**JAIPUR**  
211, Vidyut Nagar, Vaishali Nagar  
Jaipur - 302021  
Tel : +91 - 810 746 6676

**Resident Engineer**  
» Ludhiana    » Amritsar  
» Jodhpur    » Kota  
» Dehradun    » Kanpur

### SOUTH

**KARNATAKA**  
**BENGALURU**  
Unit No. 112 & 113, Ground Floor,  
Level 1, Prestige Centerpoint,  
Cunningham Road, Bengaluru - 560 052  
Tel : 080 - 22220587 / 2224570

**MYSURU**  
32, 9th Main, 5th Block, Jayalakshmpuram,  
Mysuru - 570 012. Tel : 0821-424 4409

**HUBLI**  
Tapas Mansion, Near Jain Mandir,  
2nd Cross, Hosur, Hubli - 580 021  
Tel : +91-789 957 2700

**TAMIL NADU**  
**CHENNAI**  
New No - 17, Old No. 9, Wood Road,  
1st Floor, Chennai - 600 002  
Tel : 044-286 051 55  
**TELANGANA**  
**HYDERABAD**  
Ashok Marg, Sanathnagar,  
Hyderabad - 500 018. Tel : 040 - 238 144 33

**ANDHRA PRADESH**  
**VIZAG**  
49-42-2/2, N.G.G.O's Colony  
Akkayyapalem, Vizag - 530 016  
Tel : +91 - 996 605 1793

**Resident Engineer**  
» Mangaluru    » Vijaywada

### WEST

**MAHARASHTRA**  
**MUMBAI**  
Shop No. 20, Ground Floor,  
Mermaid Sea View-CHS Limited, Sector 11,  
CBD Belapur,  
Mumbai - 400 614  
Tel : +91 823 755 7300

**PUNE**  
Plot No. L-9, CTS No. 14/4+14/5,  
Narale Sadan, Erandwane CHS Ltd,  
Opposite Dinanath Mangeshkar Hospital,  
Erandwane, Pune 411 004

**GUJARAT**  
**VADODARA**  
102, Bonny Apartment,  
Behind Baroda Gas Project, AlkaPuri,  
Vadodara - 390 005  
Tel : 0264 - 233 691

**VALSAD**  
Khushbu Mahal Apartment,  
Ground Floor, G-7, Nr. ST. Stand,  
Valsad - 396 001  
Tel : +91 - 990 440 2096

**Resident Engineer**  
» Ahmedabad  
» Surat

### EAST

**WEST BENGAL**  
**KOLKATA**  
P-46A, CIT Scheme XLV, Radha Bazar Lane,  
Kolkata - 700 001  
Tel : 033 - 222 54686

**ASSAM**  
**GUWAHATI**  
53, Madhabdevpur,  
Rehabari, Guwahati - 781008  
Tel : 0361 - 246 4813

**JHARKHAND**  
**RANCHI**  
H-62, Agora Housing Colony,  
Argora, Ranchi - 834 002  
Tel : +91-930 802 0702

**ODISHA**  
**BHUBNESHWAR**  
Plot No. N-1/224, IRC Village,  
P.S-Nayapati, Bhubneshwar - 751 015  
Tel : 0674 - 2555684

**Resident Engineer**  
» Siliguri  
» Dhanbad  
» Jamshedpur  
» Raiganj

### CENTRAL

**MAHARASHTRA**  
**NAGPUR**  
U-06, Parvati Complex,  
Ring Road, Padoley Layout,  
Swawlambi Nagar, Nagpur - 440 022  
Tel : +91-9146017300

**CHHATTISGARH**  
**RAIPUR**  
C-06, Sector-03, Devendra Nagar,  
Raipur - 492 001  
Tel : +91-911 102 2214

**MADHYA PRADESH**  
**INDORE**  
EC-40, Scheme No. 94,  
Opposite Hotel Raddison,  
Ring Road, Indore - 452010  
Tel : 0731-2558220

**REGISTERED OFFICE**  
28/A, Kasturba Gandhi Marg,  
New Delhi - 110001.  
Tel : 011-23314237, 011-23314238,  
011-23314239, 011-32944708  
Fax No : 011-23310410.

**PLANT**  
A - 20, Industrial Area, Meerut Road,  
Ghaziabad - 201001.  
Tel : 0120-2712065, 0120-2712037,  
0120-2713843  
Fax No : 0120-2723950

tollfree  
24/7 customer care  
**1800 5 323 323**  
**1800 5 ECE ECE**

email  
sales@ecelelevators.com



web  
www.ecelelevators.com

