

60
YEARS
Of Excellence



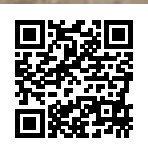
ELEVATORS
BIRLA GROUP COMPANY



PRIMUS

We Keep You Moving... Always

Truly Indian



www.eceelevators.com



If you have travelled in India, chances are you have travelled with us inside many prestigious buildings of this great nation. For over six decades now, ECE has been making state of the art elevators.

We are ECE...

"We keep you moving... Always!"

- Established in 1945, ECE is the only public listed company (National Stock Exchange) in the elevator industry.
- One of the leading domestic brand names in electrical equipment and elevators with 60 years of enriched experience.
- The first domestic player to engage in elevators manufacturing in India with long term successful technology collaboration with worldwide industry leaders of Europe and Japan.
- The one and only fully integrated manufacturing facility spread over 250,000 square feet in the National Capital Region at Ghaziabad, Uttar Pradesh.
- More than 400 trained employees and growing with a product range positioned to address the entire spectrum of Indian market.
- A dedicated and in house research and design team and amongst the very few of the elevator plants in India with capability to manufacture all lift components.
- Pan India field operations spread across 20 cities with thousands of elevators in service portfolio.
- ECE Elevator is Truly Indian, is cost competitive and we strive to be India's most trustworthy elevator brand.
- ECE brings to the industry speed, agility, reliability and the human touch. We understand India better than most.
- ECE team is committed to its customers, the users and the environment.

Truly Indian

Sustainable

Trendy

Comfort



ELEVATORS

TRANSFORMATIONAL PRIMUS

Have you ever thought how the world of comfort and efficiency is a different ball game from the way it used to be? PMSM Gearless machines have taught the world a priceless lesson: comfort and efficiency no longer have to stand on the opposite side of each other. The green sustainable elevator with PMSM Gearless machine is here to transform your elevator riding experience.

Conceptualized, engineered and developed in India, the Primus in both Machine Room (MR) & Machine Room Less (MRL) version is all set to exhibit the qualities and flexibilities of Truly Indian feature.

Key Events

1945

Incorporation and commencement of operations for repairs and manufacture of electrical equipment's

1971

Set-up manufacturing facility for manufacturing elevators at Ghaziabad, Uttar Pradesh

2002

Transferred field operations of elevators division to ThyssenKrupp and entered into exclusive supply agreement with them (for 3 years) with non-compete for 5 years

2015

Expansion and modernization plans initiated in Elevator division with next generation in house products, best in class people and service systems

2017

Launch of 24X7 ECE call centre

Application Range (MR)

Passenger Capacity		5	6	8	10	13	15	16	20
Loads (Kgs)		340	408	544	680	884	1020	1088	1360
Travel Height		40 meters		40m, 60m, 90m, 105m					
Stops		12 Stops		12 Stops, 20 Stops, 30 Stops, 35 Stops					
Speed		1.0 mps		1.0 mps, 1.25 mps, 1.5 mps, 1.75 mps					
Group Size	Simplex Full Collective								
	Duplex Full Collective								
	Upto 6 Car Group								
Machine Type	PMSM Gearless								
Drive	Variable Voltage Variable Frequency (Close Loop)								
Machine Room	Above Hoistway								

Application Range (MRL)

Passenger Capacity		5	6	8	10	13	15	16	20
Loads (Kgs)		340	408	544	680	884	1020	1088	1360
Travel Height		40 meters							
Stops		Upto 12 Stops							
Speed		1.0 meter per second							
Group Size	Simplex Full Collective								
	Duplex Full Collective								
	Upto 6 Car Group								
Machine Type	PMSM Gearless								
Drive	Variable Voltage Variable Frequency (Close Loop)								
Machine Room	Inside Hoistway								

Truly Indian

Sustainable

Trendy

Comfort

PRIMUS

WHY ?



SUSTAINABLE

The green & sustainable technology of Primus provides you with the winning edge: It is designed to reduce energy costs, make it sustainable and give you the winning edge with best in class space efficiency by:

- Operational cost benefits achieved through energy savings by using a permanent magnet synchronous motor (PMSM) gearless machine and LED lighting.
- Sustainability with elimination of polluting lubricant using gearless machine and sealed bearings
- Space saving by achieving IS specified car area in minimum shaft sizes. Industry best in class.



TRENDY

Primus is trendy, fashionable and modern. It is designed keeping your need in mind. Equipped with following amazing features it offers you all that you would want in your dream building:

- Available in both machine room and machine room less
- New modern and distinct full height car operating panel in coated wooden finish.
- Fresh new interiors of wooden finishes & etched stainless steel for car panels and doors.
- Surface mounted landing operating panel
- Glass doors
- Rear side cab wall in glass
- Dot Matrix Scrolling Display
- Flexible shaft & car dimensions



COMFORT

The moment you get into the Primus, rest assured of a world class comfort by means of:

- Gearless machine
- Variable voltage variable frequency drive
- Close loop control
- Pleasing and modern aesthetics

Primus features ensure a comfortable ride with smooth elevator acceleration, deceleration combined with improved stopping accuracy always.



SAFETY

Basic mission behind the designing of Primus was to provide adequate safety to passengers. Primus is loaded with many safety features which ensures passenger safety including:

- Infrared Door Detection Device
- Floor Detection System
- Automatic Rescue Device

A Six decade long safe work culture of ECE combined with domain expertise ensures

SAFELY

"We keep you moving ^ Always !"



ELEVATORS



STANDARD CAR

PSC-001

Finish	Panels	Mild Steel Powder Coated - Ivory
	Corner Panel	Wooden Finish DL83
False Ceiling	Type	PFC-101
	Color	Ivory
Flooring	Type	Vinyl Tiles
	Color	Beige
Handrail	Rectangular	PHR-001
Car Height	Below false ceiling	2100 mm

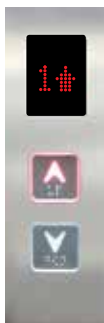


LANDING OPERATING PANEL

PLOP-7-R

Position	On each landing
Face Plate	
Type	Surface mounted on frame
Finish	Stainless Steel Hairline
Indicator	7 Segment
Button	
Type	Illuminated micro push button
Button Head	Stainless Steel Hair line with Braille
Illumination	
Type	LED
Color	Red

Standard with 1 mps & 1.25 mps upto 16 Stops



LANDING OPERATING PANEL

ELOP-2-S-R

Position	On each landing
Face Plate	
Type	Slim Type - Wall Mounted
Finish	Stainless Steel Hairline
Indicator	Scrolling
Button	
Type	Illuminated micro push button
Button Head	Stainless Steel Hair line with Braille
Illumination	
Type	LED
Color	Red

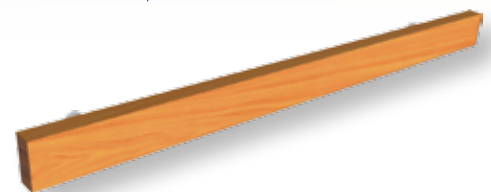
Standard with 1.25 mps >16 Stops, 1.5 mps, 1.75 mps



CAR OPERATING PANEL

PCOP-7-R

Position	Inside car on side panel
Type	Surface Mounted
Face Plate	
Type	Full Height
Finish	Wooden Finish DL83
Indicator	7 Segment
Button	
Type	Illuminated micro push button
Button Head	Stainless Steel Hair line with Braille
Illumination	
Type	LED
Color	Red



HANDRAIL : PHR-001-CS/PC/SS

Material	Wooden Finish DL 83 / Powder Coated / Stainless Steel
Shape	Rectangular
Position	On Rear Side



FALSE CEILING : PFC-101-PC/SS

Finish	Mild Steel Powder Coated : Ivory / Stainless Steel
Fan	Pressure fan with grill

Truly Indian

Sustainable

Trendy

Comfort

PRIMUS

CABIN DESIGNS



PDC-001

Description	Material
Car Door Panel, Rear & Side Accent Panel, Corner Panels	Stainless Steel MSPL-027
Front Return Panel, Side Panels, Rear Panels, Entrance Top Panel	Stainless Steel Hairline Finish
COP Face Plate Finish	Stainless Steel Hairline
False Ceiling Type	PFC - 101
False Ceiling Finish	Stainless Steel Hairline
Flooring	Vinyl: Light Grey / Marble*



PDC-002

Description	Material
Car Door Panel, Rear & Side Accent Panel, Corner Panels	Stainless Steel MSPL-223
Front Return Panel, Side Panels, Rear Panels, Entrance Top Panel	Stainless Steel Hairline Finish
COP Face Plate Finish	Stainless Steel Hairline
False Ceiling Type	PFC - 101
False Ceiling Finish	Stainless Steel Hairline
Flooring	Vinyl: Light Grey / Marble*

* Marble by customer 20 mm recess shall be provided in car
 ** Landing doors & jambs in all designer cabins as per customer requirements

FINISHES

POWDER COATING COMBINATIONS



Nickel Grey / Purple



Ivory / Orange



RAL1014 / Golden



Sand Beige / Purple



Ivory / Blue



Dark Grey / Pista Green



Sand Beige / Orange



Pista Green / Golden



Sand Beige / Brown Leatherite



RAL1014 / Signal Red

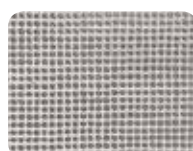
METAL EFFECTS



Stainless Steel Hairline



Stainless Steel Honey Comb



Linen Stainless Steel



Stainless Steel MSPL-223



Stainless Steel MSPL-027

Truly Indian

Sustainable

Trendy

Comfort



PDC-003

Description	Material
Car Door Panel, Rear & Side Accent Panel, Corner Panels	Coated Sheet: DL78SME
Front Return Panel, Side Panels, Rear Panels, Entrance Top Panel	MSPC-Ivory
COP Face Plate Finish	Stainless Steel Hairline
False Ceiling Type	PFC - 102
False Ceiling Finish	SS hair line with coated sheet DL78SME border
Flooring	Vinyl: Beige / Marble*



PDC-004

Description	Material
Car Door Panel, Rear & Side Accent Panel, Corner Panels	Coated Sheet: DL60SME
Front Return Panel, Side Panels, Rear Panels, Entrance Top Panel	MSPC-Ivory
COP Face Plate Finish	Stainless Steel Hairline
False Ceiling Type	PFC-102
False Ceiling Finish	SS hair line with coated sheet DL60SME border
Flooring	Vinyl : Beige / Marble*

PVC FLOORING



Ocean Blue



Lilly White



Light Grey



Beige

MARBLE



Marble design

[Marble / Granite by customer, 20mm recess provided in flooring as an option]

COATED SHEET WOODEN FINISH



DL83



DL78SME



DL60SME

PRIMUS

OPTIONS



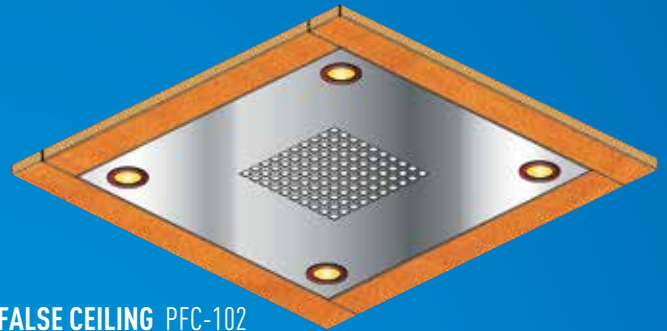
TFT 7" for
COP - 1.5 mps
& 1.75 mps



TFT 4.3" for
COP

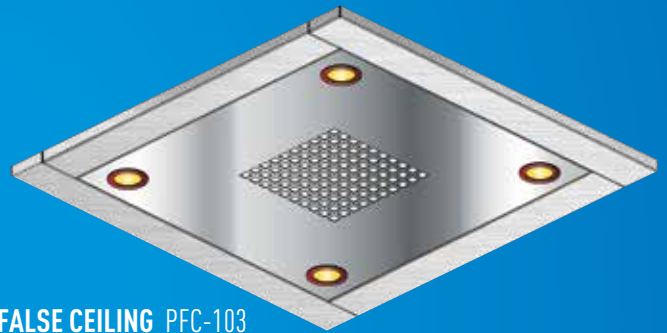


Scrolling Red
display with 1.5 Mps
& 1.75 Mps
(ECOP-S-R)



FALSE CEILING PFC-102

Finish	Coated Sheet -DL83 / Stainless Steel hairline finish
Fan	Pressure fan with grill



FALSE CEILING PFC-103

Finish	Stainless Steel hairline finish
Fan	Pressure fan with grill

CAR OPERATING PANEL PCOP-S-0

Position	Inside car on side panel
Face Plate	
Type	Full Height
Finish	Stainless Steel
Indicator	Scrolling
Button	
Type	Illuminated micro push button
Button Head	Stainless Steel Hair line with Braille
Illumination	
Type	LED
Color	Orange



HANDRAIL : PHR-002-SS

Material	Stainless Steel Finish
Shape	Round



LANDING OPERATING PANEL PLOP-S-0

Position	On each landing
Face Plate	
Type	Surface Mounted
Finish	Stainless Steel Hairline
Indicator	Scrolling
Button	
Type	Illuminated micro push button
Button Head	Stainless Steel Hair line with Braille
Illumination	
Type	LED
Color	Orange



ELEVATORS

FEATURES

FRAMED GLASS DOOR



Features / Safety	Standard	Optional
Collective Selective Operation	✓	-
Simplex Control	✓	-
Duplex Control	-	✓
6 Car Group#	-	✓
Independent Service	-	✓
Attendant Service	✓	-
Reverse Opening	-	✓
Double Car Operating Panel	-	✓
Door Open Button	✓	-
Door Close Button	✓	-
Fan on/off button	✓	-
Intercom	✓	-
Emergency Alarm	✓	-
Infrared Door Detection	✓	-
Emergency Light	✓	-
Auto Light and Fan On /Off	✓	-
Floor Announcement	-	✓
VVVF Control	✓	-
Overload Function	✓	-
Over speed Governor Switch	✓	-
Automatic Rescue Device	✓	-
Fireman Operation	-	✓
Access Control Provision	-	✓
CCTV Camera Provision	-	✓

6 Car group above 8 passengers

Truly Indian

Sustainable

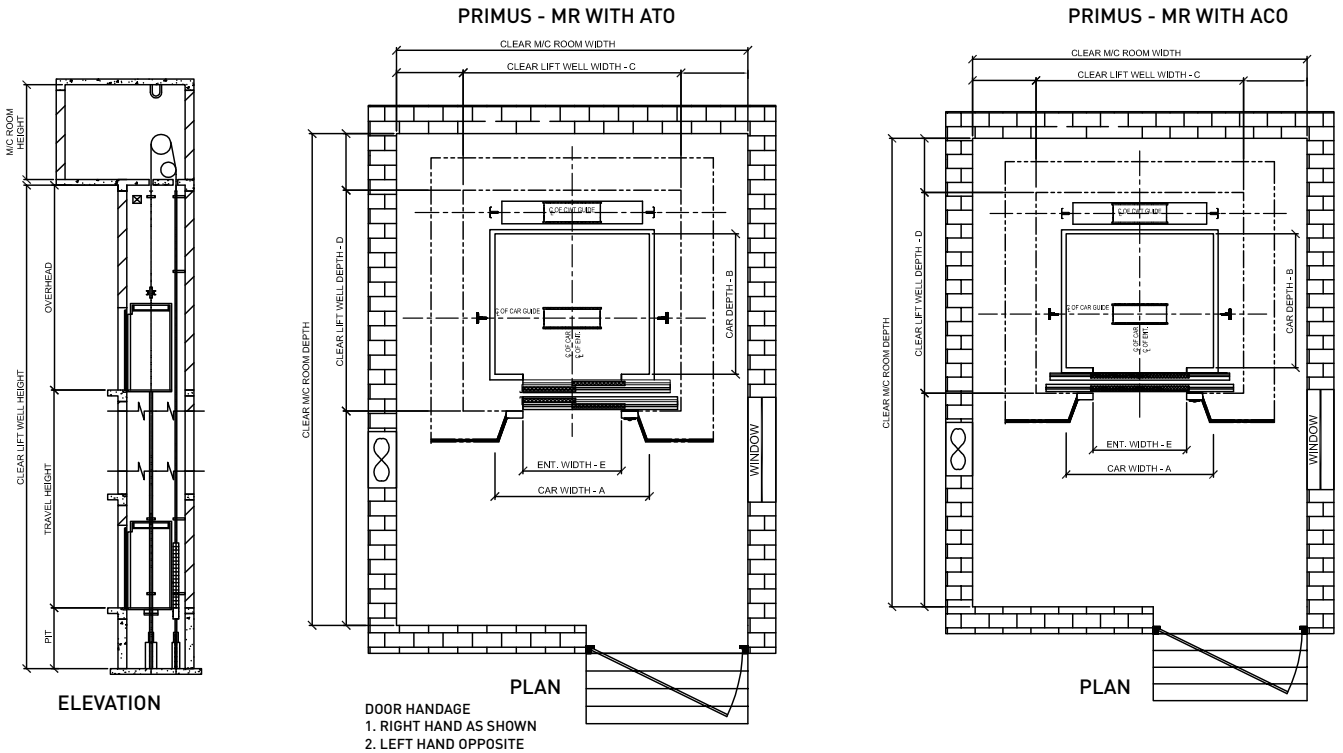
Trendy

Comfort

PRIMUS

MR WITH ACO / ATO

LAYOUT & DIMENSIONS



Rated Load (Kgs)	Rated Speed (mps)	Car Size (A x B), mm	Standard Hoistway Size (C x D), mm	Door Size (E x Height), mm	Entrance Rough Wall (W) x (H)	Door Opening Type (Centre / Telescopic)	Pit Depth mm	Overhead mm
340 Kgs (5p)	1, 1.25, 1.5, 1.75	1100 x 850	1500 x 1350	700 x 2000	1040 x 2250	ACO	(1500-1mps) (1600-1.25mps, 1.5mps) (1700-1.75mps)	(4200-1mps) (4250-1.25mps) (4500-1.5mps, 1.75mps)
		1000 x 850	1400 x 1500	700 x 2000		ATO		
1100 x 1000		1500 x 1500	700 x 2000	ACO				
408 Kgs (6p)		1200 x 900	1600 x 1400	800 x 2000	1140 x 2250	ACO		
		1100 x 1000	1700 x 1500	800 x 2000		ATO		
1000 x 1000		1400 x 1600	700 x 2000	ATO				
544 Kgs (8p)		1300 x 1100	1750 x 1650	800 x 2000	1240 x 2250	ACO		
		1100 x 1300	1500 x 1900			ATO		
1200 x 1200		1600 x 1800	ATO					
680 Kgs (10p)		1350 x 1300	1800 x 1800	900 x 2000	1340 x 2250	ACO		
		1300 x 1350	1700 x 1950			ATO		
1200 x 1400		1700 x 1950	ATO					
884 Kgs (13p)	1200 x 1400	1600 x 2000	1000 x 2000	1240 x 2250	ACO			
	2000 x 1100	2400 x 1750			ATO			
1100 x 2000	1750 x 2400	ATO						
1020 Kgs (15p)	1700 x 1250	2100 x 1800	900 x 2000	1340 x 2250	ACO			
	1250 x 1700	1650 x 2300			ATO			
1100 x 2000	1950 x 2400	ATO						
1088 Kgs (16p)	2000 x 1200	2400 x 1800	1000 x 2000	1340 x 2250	ACO			
	1200 x 2000	1850 x 2400			ATO			
1000 x 2400	1700 x 2800	ATO						
1360 Kgs* (20p)	1600 x 1500	2100 x 2000	1000 x 2000	1340 x 2250	ACO			
	1600 x 1600	2300 x 1950			ATO			
2000 x 1300	2500 x 1800	ATO						
1200 x 2100	1900 x 2500	ATO						
1050 x 2400	1800 x 2800	ATO						
2000 x 1550	2450 x 2150	ATO						
1800 x 1700	2300 x 2300	ATO						
1250 x 2500	2050 x 2900	ATO						

Dimensions are in mm.

General Note

- All dimensions are in millimeters. All dimensions are clear finished lift wells after plastering. Plumbness of the shaft must be upto maximum +50mm.
- Dimensions in the machine room depend on number and orientation of lift shafts. Lifting hook is required in machine room slab. All walls minimum 150 (RCC) or 230 (brick).
- Hoistway front wall 230 brick preferred. Door below lintel height to be minimum = Entrance height + 250mm.
- RCC machine room structural slab minimum 150 mm thick, designed to sustain minimum 1000 kg/m² UDL. Plus reaction loads shown in GAD for specific requirements our local representative will be happy to work with you in preparation of the drawings
- Machine room height as minimum 2500mm below lintel
- 2400mm minimum opening height required at lowest and ground floor levels for entry of assembled equipment in shaft.

* Pit depth for 1360 kgs shall be 100mm more than the shown pit depth

Abbreviation : ACO - Automatic Centre Opening, ATO - Automatic Telescopic Opening

Truly Indian

Sustainable

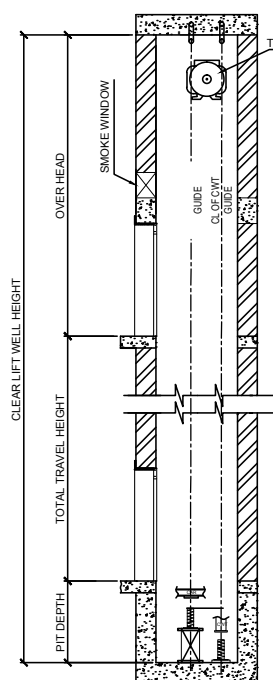
Trendy

Comfort

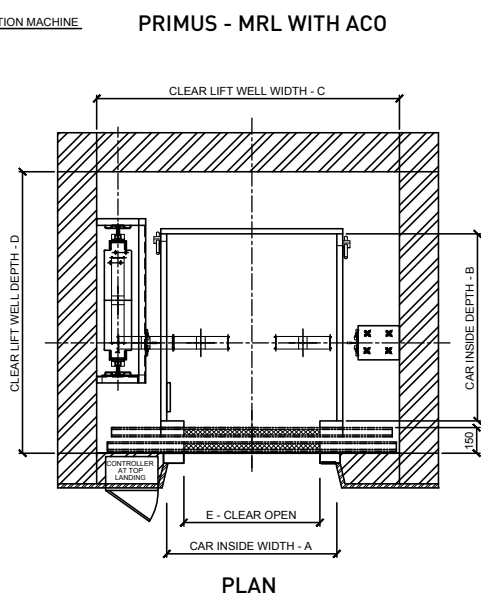


ELEVATORS

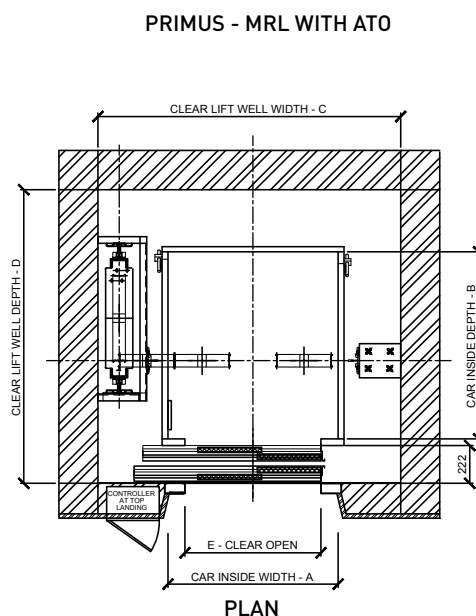
MRL WITH ACO / ATO



ELEVATION



PLAN



PLAN

Rated Load (Kgs)	Rated Speed (mps)	Car Size (A x B), mm	Standard Hoistway Size (C x D), mm	Door Size (E x Height), mm	Door Opening Type (Centre / Telescopic)	Pit Depth	Overhead
340 Kgs (5p)	1	850 x 1000	1550 x 1400	700 x 2000	ACO	1500	4200
			1450 x 1350	700 x 2000	ATO		
408 Kgs (6p)		1000 x 1100	1600 x 1450	700 x 2000	ACO		
		1000 x 1100	1725 x 1400	800 x 2000	ACO		
544 Kgs (8p)		1050 x 1050	1650 x 1350	700 x 2000	ACO		
		850 x 1200	1450 x 1450	700 x 2000	ATO		
		1050 x 1300	1700 x 1600	800 x 2000	ACO		
		1300 x 1100	1900 x 1400	800 x 2000	ACO		
		1000 x 1350	1600 x 1600	700 x 2000	ACO		
		1000 x 1350	1600 x 1600	800 x 2000	ATO		
680 Kgs (10p)		950 x 1400	1550 x 1700	800 x 2000	ATO		
		1350 x 1300	2000 x 1800		ATO		
		1350 x 1300	2000 x 1700	800 x 2000	ACO		
		1200 x 1400	1900 x 1800		ACO		
	1150 x 1450	1800 x 1700	ACO				
884 Kgs (13p)	1200 x 1800	1900 x 2100	900 x 2000	ACO			
	1050 x 2100	1700 x 2350	800 x 2000	ACO			
	1050 x 2000	1900 X 2250	900 x 2000	ACO			
	1450 x 1450	2100 x 1750	900 x 2000	ACO			
	2000 x 1100	2650 x 1600	900 x 2000	ACO			
	1050 x 2000	1700 X 2350	900 x 2000	ATO			
	1050 x 2100	1700 x 2450	900 x 2000	ATO			
	1400 x 1750	2100 x 2050	1000 x 2000	ACO			
	1450 x 1650	2100 x 1950	900 x 2000	ACO			
	1500 x 1600	2150 x 1900	900 x 2000	ACO			
1020 Kgs (15p)	1000 x 2400	1650 x 2700	900 x 2000	ATO			
	1200 x 2000	1900 x 2250	900 x 2000	ACO			
		1850 x 2300	1000 x 2000	ATO			
		1400 x 1800	2100 x 2100	1000 x 2000	ACO		
	2000 x 1300	2650 x 1700	1000 x 2000				
1600 x 1600	2250 x 1900	1000 x 2000					
1088 Kgs (16p)	1500 x 1700	2150 x 2000	1000 x 2000	ACO			
	1200 x 2100	1900 x 2350	900 x 2000				
		1850 x 2400	1000 x 2000				
	1200 x 2100	1850 x 2400	1000 x 2000		ATO		
1360 Kgs (20p)	1600 x 1900	2500 x 2250	1000 x 2000	ACO			
	1700 x 1800	2600 x 2200	1000 x 2000	ATO			
	1250 x 2500	2100 x 2900	1000 x 2000	ATO			

Dimensions are in "mm"

General Note

- All dimensions are in millimeters. All dimensions are clear finished lift wells after plastering. Plumbness of the shaft must be upto maximum +50mm.
- Smoke window Sq 700x700 of removable type with louvers
- Hoistway front wall 230 brick preferred. Door lintel height to be minimum 2250mm.
- 2400mm minimum opening below lintel height required at lowest and ground floor levels for entry of assembled equipment in shaft.

Truly Indian

Sustainable

Trendy

Comfort



ELEVATORS
AN ISO 9001:2008
CERTIFIED COMPANY

NETWORK

- REGISTERED OFFICE
- PLANT
- BRANCH OFFICE
- RESIDENT ENGINEERS



NORTH

DELHI

NEW DELHI
ECE House Annexe,
28A, K.G. Marg, New Delhi - 110 001
Tel : 011-23314237 / 38 / 39

UTTAR PRADESH

NOIDA

G - 39, Sector - 63, Noida
Dist : Gautam Budh Nagar - 201 301
Tel : 0120 - 4545200

LUCKNOW

B-103, Sector-C, Mahanagar,
Dist : Lucknow - 226 006
Tel : +91 - 770 408 0111

PUNJAB

MOHALI

SCO No. - 12-13, 2nd Floor, Sector - 65 A,
Phase-XI, Mohali - 160 055
Tel : +91 - 814 616 8095

RAJASTHAN

JAIPUR

211, Vidyut Nagar, Vaishali Nagar
Jaipur - 302021
Tel : +91 - 810 746 6676

Resident Engineer

- » Ludhiana » Amritsar
- » Jodhpur » Kota
- » Dehradun » Kanpur

SOUTH

KARNATAKA

BENGALURU

Unit No. 112 & 113, Ground Floor,
Level 1, Prestige Centerpoint,
Cunningham Road, Bengaluru - 560 052
Tel : 080 - 22220587 / 2224570

MYSURU

32, 9th Main, 5th Block, Jayalakshmiपुरam,
Mysuru - 570 012. Tel : 0821-424 4409

HUBLI

Tapas Mansion, Near Jain Mandir,
2nd Cross, Hosur, Hubli - 580 021
Tel : +91-789 957 2700

TAMIL NADU

CHENNAI

New No - 17, Old No. 9, Wood Road,
1st Floor, Chennai - 600 002
Tel : 044-286 051 55

TELANGANA

HYDERABAD

Ashok Marg, Sanathnagar,
Hyderabad - 500 018. Tel : 040 - 238 144 33

ANDHRA PRADESH

VIZAG

49-42-2/2, N.G.G.O's Colony
Akkayyapalem, Vizag - 530 016
Tel : +91 - 996 605 1793

Resident Engineer

- » Mangaluru » Vijaywada

WEST

MAHARASHTRA

MUMBAI

Shop No. 20, Ground Floor,
Mermaid Sea View-CHS Limited, Sector 11,
CBD Belapur,
Mumbai - 400 614
Tel : +91 823 755 7300

PUNE

Plot No. L-9, CTS No. 14/4+14/5,
Narale Sadan, Erandwane CHS Ltd,
Opposite Dimanath Mangeshkar Hospital,
Erandwane, Pune 411 004

GUJARAT

VADODARA

102, Bonny Apartment,
Behind Baroda Gas Project, AlkaPuri,
Vadodara - 390 005
Tel : 0264 - 233 691

VALSAD

Khushbu Mahal Apartment,
Ground Floor, G-7, Nr. ST. Stand,
Valsad - 396 001
Tel : +91 - 990 440 2096

Resident Engineer

- » Ahmedabad
- » Surat

EAST

WEST BENGAL

KOLKATA

P-46A, CIT Scheme XLV, Radha Bazar Lane,
Kolkata - 700 001
Tel : 033 - 222 54686

ASSAM

GUWAHATI

53, Madhabdevpur,
Rehabari, Guwahati - 781008
Tel : 0361 - 246 4813

JHARKHAND

RANCHI

H-62, Agora Housing Colony,
Argora, Ranchi - 834 002
Tel : +91-930 802 0702

ODISHA

BHUBNESHWAR

Plot No. N-1/224, IRC Village,
P.S-Nayapali, Bhubneshwar - 751 015
Tel : 0674 - 2555684

Resident Engineer

- » Siliguri
- » Dhanbad
- » Jamshedpur
- » Raiganj

CENTRAL

MAHARASHTRA

NAGPUR

U-06, Parvati Complex,
Ring Road, Padoley Layout,
Swawlambi Nagar, Nagpur - 440 022
Tel : +91-9146017300

CHHATTISGARH

RAIPUR

C-06, Sector-03, Devendra Nagar,
Raipur - 492 001
Tel : +91-911 102 2214

MADHYA PRADESH

INDORE

EC-40, Scheme No. 94,
Opposite Hotel Raddison,
Ring Road, Indore - 452010
Tel : 0731-2558220

REGISTERED OFFICE

28/A, Kasturba Gandhi Marg,
New Delhi - 110001.
Tel : 011-23314237, 011-23314238,
011-23314239, 011-32944708
Fax No : 011-23310410.

PLANT

A - 20, Industrial Area, Meerut Road,
Ghaziabad - 201001.
Tel : 0120-2712065, 0120-2712037,
0120-2713843
Fax No : 0120-2723950

tollfree
24/7 customer care

1800 5 323 323
1800 5 ECE ECE

email

sales@ecelelevators.com



web

www.ecelelevators.com

